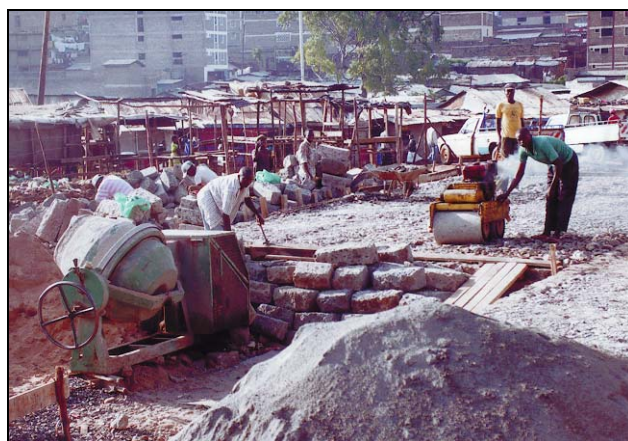
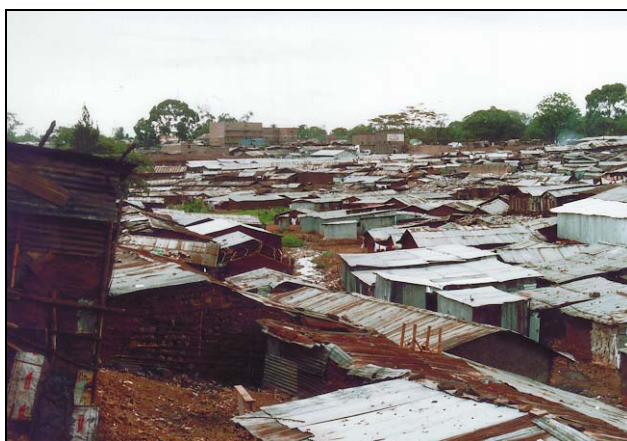


KENYA

MATHARE 4A DEVELOPMENT PROGRAMME (IMPLEMENTATION)

Location	Nairobi
Client	Ministry of Public Works and Housing, Nairobi
Financing	German Financial Cooperation / KfW
Period	1997 - 2001
Value of Services	1.000 million US\$



Project Description

Continuation of a Pilot-project. Improving the general living environment through the provision of urban infrastructure, socially acceptable housing and adequate access to public facilities and utilities, in the slums of Mathare Valley (estimated population: 100,000), in the centre of Nairobi.

The components of the Project are:

- Target group mobilisation and organisation, project related social work for some 22,000 inhabitants of Mathare 4A area
- Compensation of owners for the removal of illegal structures; land management and land transfer
- Construction of basic infrastructure (toilet units, access roads, surface drainage system, garbage collection points, streetlighting)
- Construction of housing (relocation and shelter improvement)
- Promotion of community facilities
- Support to Project-Executing Agency, the Amani Housing Trust of the Catholic Archdiocese of Nairobi

Scope of Services

Technical support to the Executing Agency in planning and implementation of construction works.

The main tasks are:

- Creation of Planning Basis: mapping, topographical surveying, geotechnical investigations
- Preliminary design for wetcores, sewerage, water supply, temporary and formal housing, land reclamation. Cost estimates and affordability check
- Detailed designs for roads, storm water drains, sewerage, water reticulation system and street lighting. Bill of quantities and specifications, Engineer's cost estimate
- Formulation of development proposal for community facilities and improved shelter
- Supervision of tendering and contracting
- Works supervision and financial control
- Set-up of a maintenance system
- Advice on land management/land transfer, plot allocation, registration of land titles